

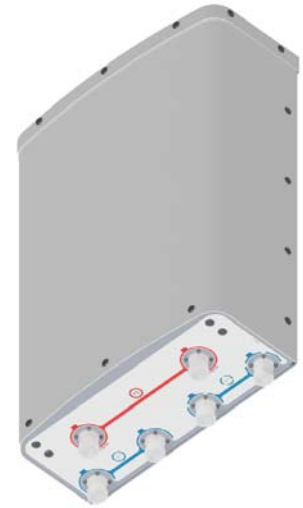
## HTXCWW4513Fxy0

Tri Band | Panel | XXX-Pol | 45° | 13.3 / 14.1 / 14.1 | Fixed Tilt

### Ordering Options

When ordering, replace the "x" in the model number with the value of electrical downtilt for the 696-896 MHz frequency and replace the "y" in the model number with the value of electrical downtilt for the 1695-2180 MHz range. Select from the options listed below under Electrical Downtilt.

Electrical Characteristics		696-896 MHz		(2x) 1695-2180 MHz	
Frequency Bands (MHz)		696-790	790-896	1695-1880	1920-2180
Polarization		±45°		(2x) ±45°	
Horizontal Beamwidth		47°	42°	49°	42°
Vertical Beamwidth		40.6°	35.4°	24.8°	23.0°
Gain		12.2 dBi	13.3 dBi	12.9 dBi	14.1 dBi
Electrical Downtilt		(x) 0, 20		(y) 0, 10	
Impedance		50Ω		50Ω	
VSWR		≤ 1.5:1		≤ 1.5:1	
Front-to-Back Ratio		> 24 dB		> 25 dB	
Isolation Between Bands		> 30 dB		> 30 dB	
Isolation Between Ports		≥ 25 dB		≥ 25 dB	
IM3 (2x20W carrier)		< -150 dBc		< -150 dBc	
Input Power		(2x) 500 W		(4x) 300 W	
Lightning Protection		Direct Ground			
Total Number of Connectors		Antenna has 6 connectors located at the bottom			
Connectors Per Band, Type, Location	R1	696-896 MHz	2 Connectors / 7/16-DIN Female / Bottom		
	B1	1695-2180 MHz	2 Connectors / 7/16-DIN Female / Bottom		
	B2	1695-2180 MHz	2 Connectors / 7/16-DIN Female / Bottom		



### Mechanical Characteristics

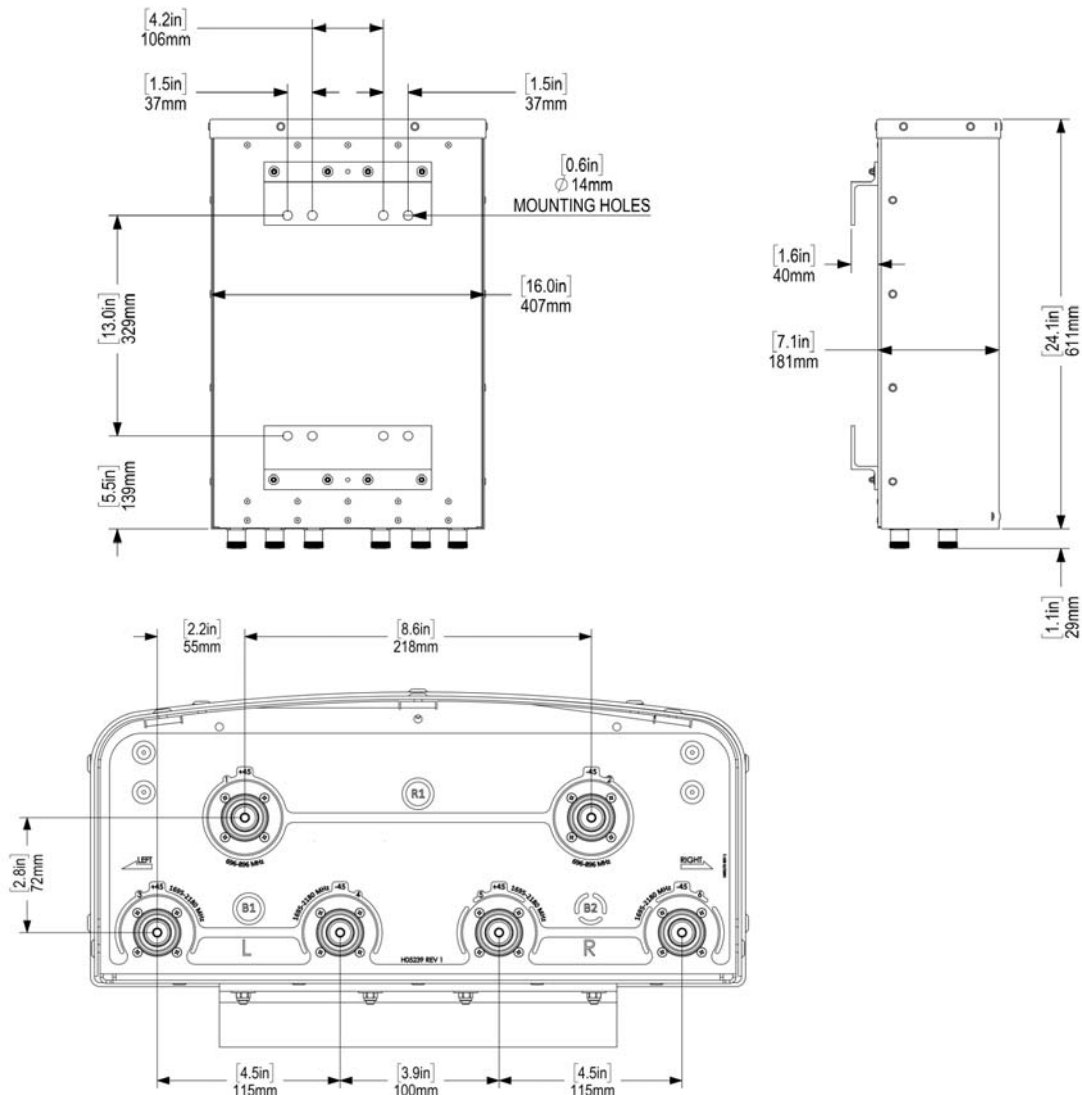
Dimensions (Height x Width x Depth)		611 x 412 x 185 mm	24.1 x 16.2 x 7.3 in
Weight without Mounting Brackets		7.1 kg	15.7 lbs
Survival Wind Speed		241 km/hr	150 mph
Wind Area	Front	0.25 m²	2.7 ft²
	Side	0.11 m²	1.2 ft²
Wind Loads (160 km/hr or 100 mph)	Front	305 N	68 lbf
	Side	135 N	30 lbf

Quoted performance parameters are provided to offer typical, peak or range values only and may vary as a result of normal testing, manufacturing and operational conditions. Extreme operational conditions and/or stress on structural supports is beyond our control. Such conditions may result in damage to this product. Improvements to products may be made without notice.

# HTXCWW4513Fxy0

Tri Band | Panel | XXX-Pol | 45° | 13.3 / 14.1 / 14.1 | Fixed Tilt

Mounting Options	Part Number	Image	Fits Pipe Diameter	Weight
The following mounting bracket kit must be ordered separately.				
2-Point Mounting & Downtilt Bracket Kit	36210006		40-115 mm 1.57-4.5 in	4.1 kg 9.0 lbs



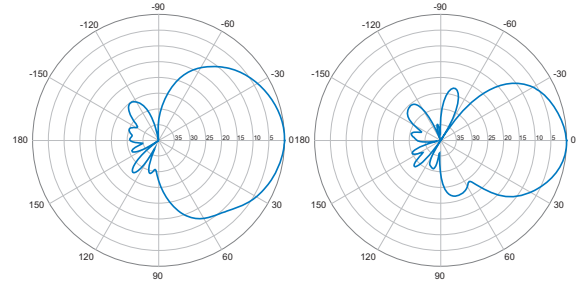
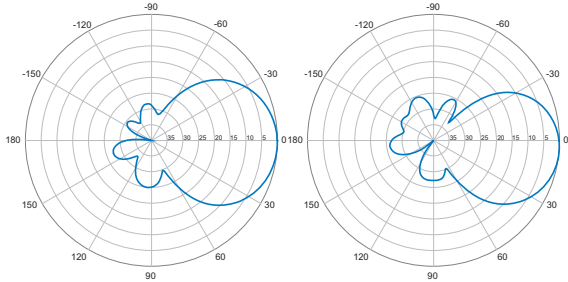
Quoted performance parameters are provided to offer typical, peak or range values only and may vary as a result of normal testing, manufacturing and operational conditions. Extreme operational conditions and/or stress on structural supports is beyond our control. Such conditions may result in damage to this product. Improvements to products may be made without notice.

# HTXCWW4513Fxy0

Tri Band | Panel | XXX-Pol | 45° | 13.3 / 14.1 / 14.1 | Fixed Tilt

696-896 MHz (R1)

1695-2180 MHz (B1 & B2)

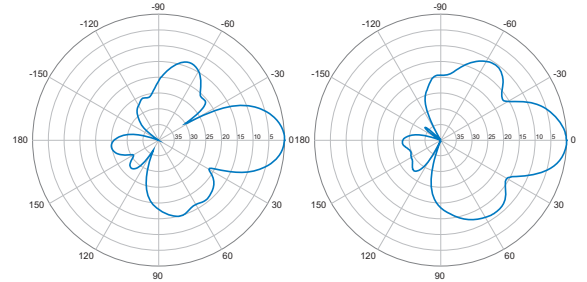
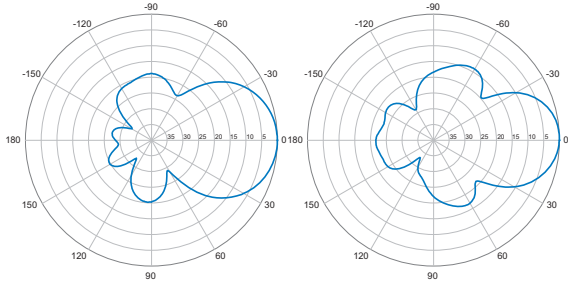


Horizontal | 696-790 MHz

Horizontal | 790-896 MHz

Horizontal | 1695-1880 MHz

Horizontal | 1920-2180 MHz

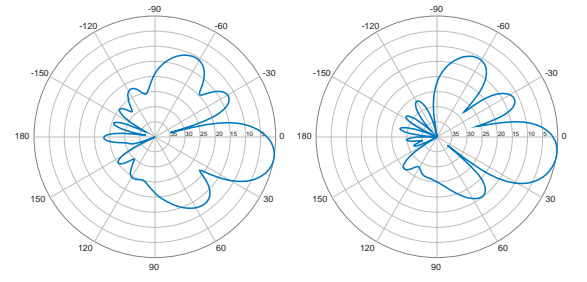
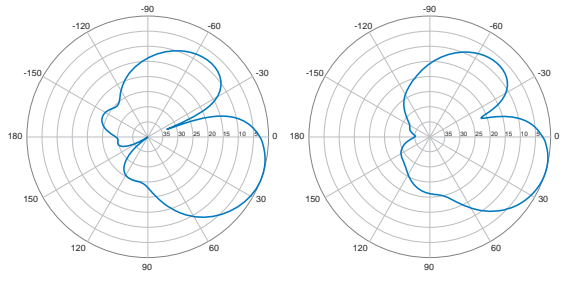


0° | Vertical | 696-790 MHz

0° | Vertical | 790-896 MHz

0° | Vertical | 1695-1880 MHz

0° | Vertical | 1920-2180 MHz



20° | Vertical | 696-790 MHz

20° | Vertical | 790-896 MHz

10° | Vertical | 1695-1880 MHz

10° | Vertical | 1920-2180 MHz

Quoted performance parameters are provided to offer typical, peak or range values only and may vary as a result of normal testing, manufacturing and operational conditions. Extreme operational conditions and/or stress on structural supports is beyond our control. Such conditions may result in damage to this product. Improvements to products may be made without notice.