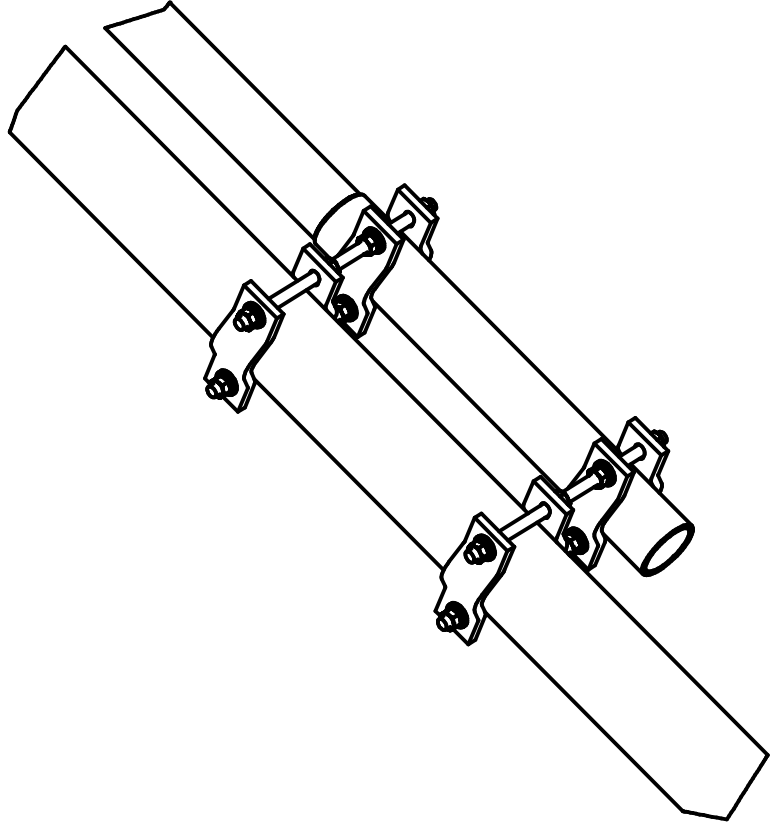
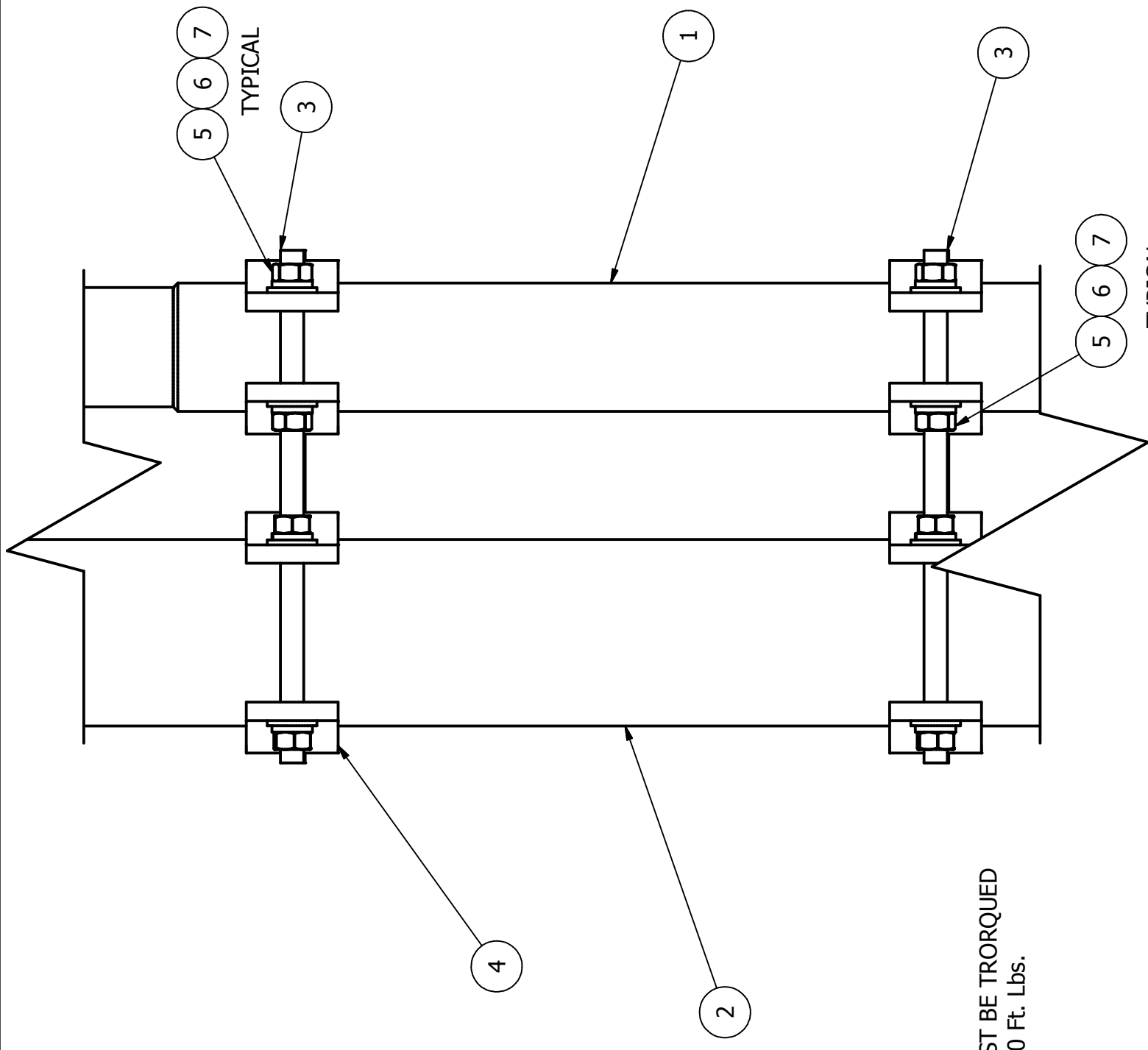


Parts List			
ITEM	QTY	PART NUMBER	DESCRIPTION
1	1	REF	BCD ANTENNA
2	1	REF	MOUNTING POLE
3	4	37410011	THREADED ROD
4	8	21699997	PIPE BRACKET
5	16	37310012	NUT, 1/2 INCH
6	16	39800613	LOCK WASHER 1/2 INCH
7	16	37210012	WASHER 1/2 INCH GALV



CRITICAL NOTE: ALL 1/2" FASTENERS MUST BE TORQUED TO A MIN. OF 55 Ft. Lbs AND A MAX. OF 60 Ft. Lbs.



REVISION HISTORY		APPROVED BY	
REV	DESCRIPTION	TITLE	DATE
A	RELEASE TO PRODUCTION	ENGINEERING	12/7/2007
		PRODUCTION	
		DRAFTING	

TOLERANCE SPECIFICATIONS UNLESS OTHERWISE SPECIFIED
 X. or X.XXX = ± 1.0mm
 X.X or X.XX = ± 0.5mm
 X.XX or X.XXX = ± 0.2mm
 ANGLES
 X~ = ± 1~
 X.X~ = ± .5~

DESCRIPTION: **BCD MOUNTING BRACKET ASSEMBLY**

MATERIAL: _____ Scale _____

DIMENSIONS IN METRIC: SIZE **B** DWG. NO. **36413005** REV **A**

DRAWN BY: **kburritt** DATE: **12/7/2007** SHEET **1 OF 1**

