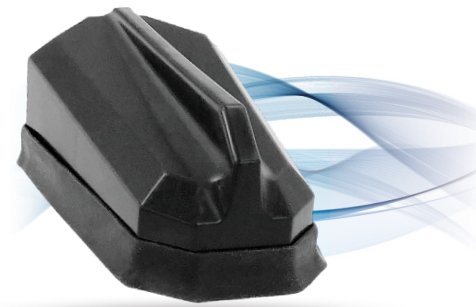


ULTRAMAX™ 2-in-1

Single Cell LTE and GNSS Antenna for Panasonic

ULTRAMAX is our full outdoor antenna designed specifically for any Panasonic rugged notebook or tablet including the CF-33 that has an embedded LTE and a **dedicated GNSS** modem. This antenna offers a high gain cellular/LTE antenna which includes LTE Band 14 support for FirstNet, and a GNSS antenna inside a single robust and compact housing.

- 1 x Wideband Cellular/LTE Element
- 1 x GNSS Element
- Two embedded antenna technologies that operate over multiple bands in one housing
- These antennas have the cables coming out “off center” from the bottom of the housing
- Lower profile and smaller footprint than competing solutions
- USA factory ensures fast turnaround customizations
- High gain provides bigger cellular footprint
- Must be mounted on metal
- Available in black or white
- US Patent 10109918



Compact and Robust
UV Resistant Housing



Customizable Cables
and Connectors to
Connect to Any Modem



Full Outdoor
Installation Ready



Fast custom
turnaround time



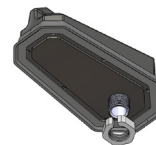
Flexible Mounting
Options



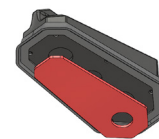
Low loss cable
accessories



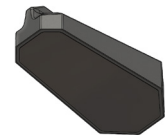
GNSS



Bolt Mount



Adhesive Mount



Magnetic Mount

Descriptions/Applications

The ULTRAMAX antenna builds on the best in class RF performance, leading design features, and extended operational life of our highly successful Fleet and Public Safety Antenna products. Like all our antennas, this product has been designed to be robust to withstand the natural hazards a vehicle faces including vibration, hot, cold, ice, salt, dirt, car washes, and tree branch sweeps. Our antennas typically outlast the life of a vehicle.

Standard Configurations

AP-CG-Q-S11-BL-15	Cell/LTE & GNSS, Threaded Bolt Mount, TNC on Cell/LTE & GNSS, Black, 15ft coax
AP-CG-A-S11-BL-15	Cell/LTE & GNSS, Adhesive Mount, TNC on Cell/LTE & GNSS, Black, 15ft coax
AP-CG-M-S11-BL-15	Cell/LTE & GNSS, Magnetic Mount, TNC on Cell/LTE & GNSS, Black, 15ft coax

Also available in color white, and customizable cable lengths up to 35 feet.

Electrical Data			
Frequency Range	Element 1		698-960/1700-2700 MHz
	Element 2		1550~1610 MHz
Operational Bands	Element 1		LTE/Cellular
	Element 2		GPS L1/GALILEO E1/GLONASS G1/BeiDou B1
Peak Gain: Isotropic	Element 1	698-960 MHz	4.6 dBi
		1710-2700 MHz	6.5 dBi
	Element 2	30.50 dBi	

Environmental Data	
Hazardous Substances	RoHS Compliant
Temperature	-40°C to 85°C (-40°F to + 185°F) Operating and Storage
Humidity (Non-Condensing)	-5% to 95% Operating and Storage
Military Spec	MIL-STD 810 conformance to vibration and humidity

Mounting Data			
Dimensions	Height	2.220" (56.4 mm)	
	Width	3.831" (97.3 mm)	
	Length	7.000" (117.8 mm)	
Operating Temp		-22°/176°F (-30°/+80°C)	
Color		Black (BL) or White (WH)	

Cable Data			
Cell/LTE & GNSS	Type	CFD195 Low Loss	
	Diameter	0.195" (4.953 mm)	
	Length	1 feet	
	Termination	SMA Male	

GNSS Data - Ceramic Patch Antenna Specification			GNSS Data - LNA Specification		
Bandwidth	1561 – 1602 MHz		Noise Figure	1.2 dB	
Gain@Zenith	2.5 dBi		Gain	28 dBi	
Polarization	R.H.C.P.		Voltage	3.3V~5.6V	
Axial Ratio	3.0 dB Typ.		Current	9.6±1mA@3.3V	