



Fusion2GO-RVTM

Adjustable All Carrier RV Cellular Signal Booster Kit

User Guide



Table of Contents

Thank you for purchasing SureCall’s Fusion2Go-RV cell phone signal booster kit. Fusion2Go-RV provides enhanced voice, text and 4G data signal for any recreational vehicle.

If you have any questions during setup, please reach out to our US-based experienced support technicians:

- Call: 1-888-365-6283
- Email: support@surecall.com
- Or, chat: www.surecall.com, 7:00 AM – 5:00 PM PST, Monday – Friday

How it works 3

Package Contents 4

Installation:

 Step 1: Mount Outside Antenna5

 Step 2: Install the Signal Booster 6

 Step 3: Connect Power 6

 Step 4: LED Indicators and Gain Settings 7-8

Troubleshooting 8

Specifications 9

Kitting Information 10

Warranty..... 10

Safety, FCC and IC Information 11

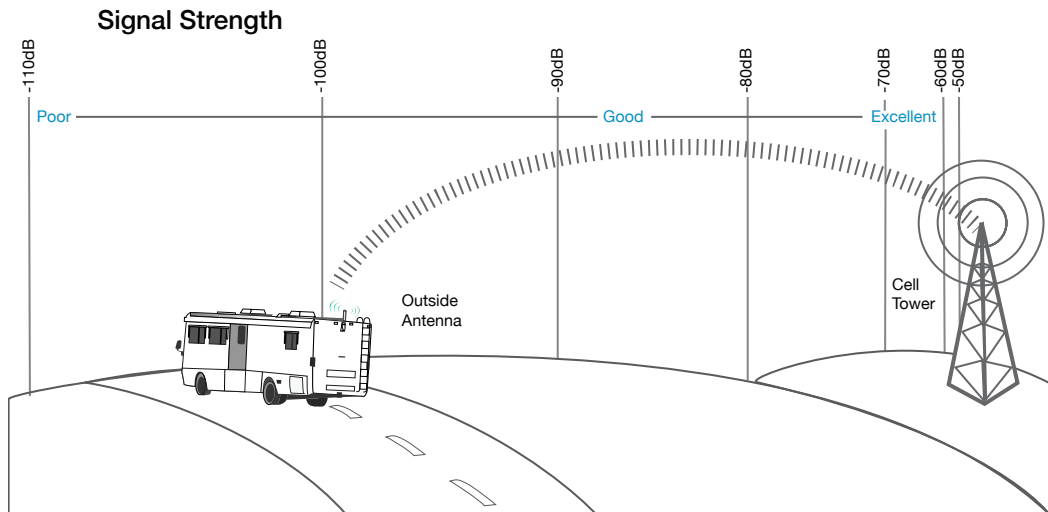
How It Works

The SureCall Fusion2Go-RV is a high-quality bidirectional booster that enhances cellular signals for motor homes, and other large vehicles.

The Fusion2Go-RV works with two antennas:

- An inside antenna that communicates with your cell phone.
- An outside antenna that communicates with the cell tower.

Signals sent from a cell tower are received by the outside antenna, amplified by the booster and then sent to your cell phone via the inside antenna. When your phone transmits, the signal is sent to the inside antenna, and then sent to the cell tower via the outside antenna. A minimum amount of cellular reception is required for the Fusion2Go-RV to work properly. Cellular signal strength is measured in dBm, an abbreviation of the radio power per milliwatt. A minimum of -100 dBm is required. Signal readings usually appear as a negative number (for example, -85). The stronger the signal, the closer it gets to zero. See graph below.



Package Contents

Package Contents

- 1. Unpack all package contents. For missing or damaged items, contact your reseller.
- 2. Turn over the signal booster and record the model and serial number for reference:

Serial #: _____

Purchase Date: _____
- 3. Keep the carton and packing material to store the product in case you need to return it.

Your Fusion2Go-RV signal booster package includes the following items:

- One SureCall Fusion2Go-RV signal booster
- DC power adapter for vehicle
- One inside whip antenna
- One outside omni antenna
- One cable, SC-240, 40ft



Fusion2Go



SC-120
Inside Whip Antenna



SC-288W
Outside Omni Antenna



SC-240 Cable

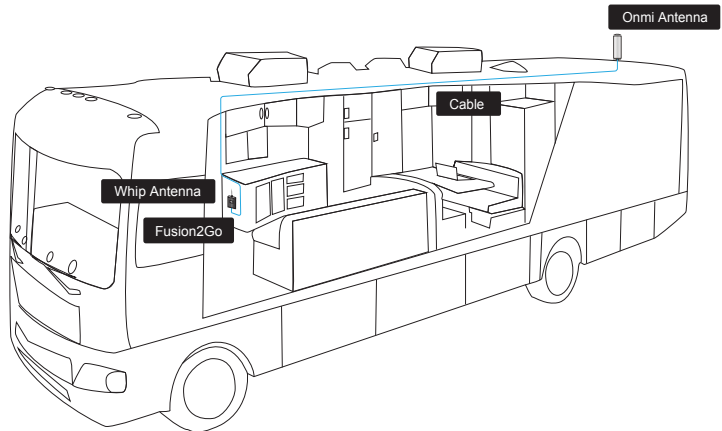
Warning: Unauthorized antennas, cables, and/or coupling devices are prohibited by FCC new rules. Please contact FCC for details: 1-888-CALL-FCC. Changes or modifications not expressly approved by SureCall could void the user's authority to operate the equipment.

Step 1: Mount Outside Antenna

Before you begin, please note that your installation may require the use of a mast or RV mounting system on which to mount the outside antenna. One has not been provided and may be obtained by a 3rd party.

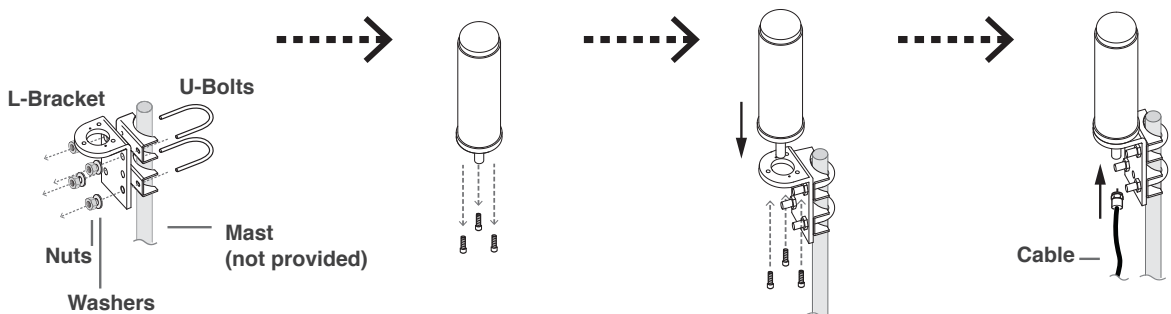
The provided antenna is omni-directional, which receives and sends signals in a 360° radius. Mount the antenna at the highest possible elevation and in an upright position.

Ensure that the mounting area has at least a 12-inch radius clear of obstructions and other radiating elements.



Installation:

1. Assemble the L-Bracket with U-bolts, brackets, nuts and washers and secure to mast as shown in the illustration
2. Remove all three screws from antenna base
3. Secure antenna to the horizontal plate of L-Bracket using screws.
4. Connect one end of the provided coax cable to the antenna and tighten the connection.



Step 2. Install the Signal Booster

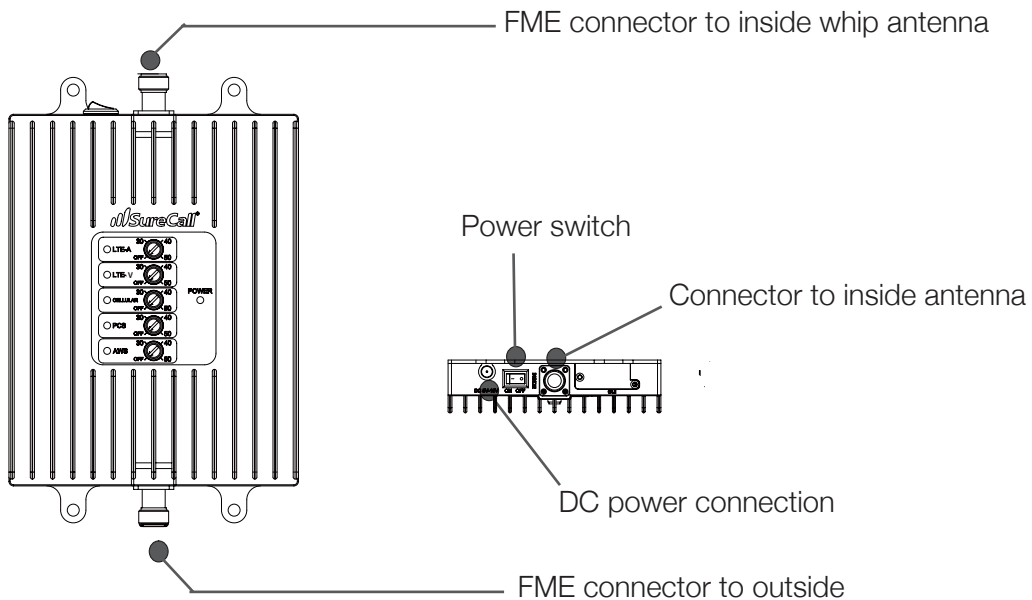
1. Connect the inside whip antenna to the port on the side of the booster labeled “INSIDE”.
2. Mount the booster within a cabinet or on a side panel close to a power source. The location you select should:
 - Avoid excessive heat, direct sunlight, or moisture.
 - Provide proper ventilation.
3. Route the cable from the outside antenna inside and connect to the port on the booster labeled “OUTSIDE”.

Step 3. Connect Power

Connect the DC power adapter to the signal booster and plug into power outlet. Once connected, turn the power switch on the booster to ON.

- The Power LED will light, indicating that the signal booster is ready for use.
- The Alert LEDs will flash 5 times for each band to indicate that the band is operational.

If the Power LED does not turn ON, verify that outlet and adapter are working and that the power switch is on.



Step 4. LED Indicators and Gain Settings

The SureCall gain dials should always be at maximum level unless the control light in a specific frequency band is flashing red or flashing red-yellow. In either case, only reduce booster gain dials if other recommended actions do not resolve the issue.

In the event Red LEDs appear either solid or flashing, further separation between the booster and outside antenna is recommended.

If unable to provide more antenna separation and the Alert LEDs continue to flash after the initial activation period, lower the dial for the blinking LED by 5 dB and monitor the reception on your cell phone for improvement.

Note that the booster case may become warm during operation. This is normal.

WARNING. The booster is rated for 5-15V input voltage. DO NOT use the booster with a higher voltage power supply. This can damage the booster and/or cause personal injury.

LED Indicators

LED Color	LED Condition	Resolution
Yellow	Solid	Indicates that the frequency band is Inactive. After a period of time, if there's no activity the band will go into sleep mode. Light is off while band is active. This is part of normal operation.
Yellow	Flashing	Indicates that the Automatic Gain Control (AGC) is self-adjusting. This is part of normal operation.
Red	Flashing	Indicates that the booster is receiving too much signal which could cause the affected band to automatically turn off. When this happens: 1. Increase the separation between antennas. 2. As a last resort, turn down the dB gain on the dial until the light turns OFF or flashes yellow.
Red	Solid	Band is off. If a red light has been flashing for an extended time, the band will automatically shut off and display a solid red light. This can also happen when the booster dials have been turned all the way down.
Yellow/Red	Alternately Flashing	Self-oscillation has been detected and to prevent it, one or more of the frequency bands have shut down. If this happens: Try increasing the separation between the booster and outside antennas. If the condition continues, lower the dB gain in small increments until the light turns off or flashes yellow.

Troubleshooting

Problem	Resolution
Signal booster has no power	Verify that the LED on the booster is ON. Connect the power supply to an alternate power source. Verify that the power source is operational and the fuse is intact. If the POWER LED on the signal booster is OFF, return the power supply to SureCall. Contact tech support at to receive an RMA at: 1-888-365-6283 or support@surecall.com, or go to www.surecall.com, 7:00 am – 5:00 pm PST, Monday – Friday to chat with a representative.
After installing your signal booster system, you have no signal or reception.	Be sure your signal booster's dB gain is turned up to full power on each dial. Verify that cable connections are tightly fitted to the booster. Try further separating the antennas. ⓘ Remember: Bars are not always a reliable measure of signal. The best way to confirm signal coverage is the ability to place and hold a call.

Specifications	Fusion2Go-RV	Fusion2Go-RV Canada
Uplink Frequency Range (MHz):	698-716 / 776-787 / 824-849 / 1850-1915 / 1710-1755 (G Block Included)	
Downlink Frequency Range (MHz):	728-746 / 746-757 / 869-894 / 1930-1995 / 2110-2155 (G Block Included)	
Input Impedance:	50 Ω	
Maximum Gain:	50 dB	
Noise Figure:	5 dB	
VWSR:	≤2.0	
Supported Standards:	CDMA, WCDMA, GSM, EDGE, HSPA+, EVDO, LTE and all cellular standards	
DC Power:	5-15V	
Maximum Output Power:	1 Watt EIRP	3 Watt EIRP
Cable:	SC-240	
RF Connectors:	FME Male (both ends)	
Power Consumption:	<25W	
Operation Temperature:	-4° to +158° F	
Dimensions:	7.875 x 5 x 1.188 inches	
Weight:	2 lb 3 oz	
FCC ID / IC:	RSNMOBILE5	7784A-MOBILE5CA

Frequency Uplink	Mode	Gain (dB)	CH Power (dBm)	Peak Power (dBm)	BW (MHz)	Frequency Downlink	Mode	Gain (dB)	CH Power (dBm)	Peak Power (dBm)	BW (MHz)
1850-1915MHz	GSM	42.90	24.98	25.20	71.00	1930-1995MHz	GSM	43.70	14.50	14.06	76.50
	CDMA	43.90	23.54	22.15			CDMA	43.40	14.70	13.36	
	WCDMA	43.20	24.41	18.18			WCDMA	43.30	15.50	9.88	
1710-1755MHz	GSM	44.40	22.05	21.88	76.00	2110-2155MHz	GSM	42.20	14.60	14.88	95.30
	CDMA	43.80	20.42	19.31			CDMA	42.30	14.90	13.17	
	WCDMA	43.30	22.43	16.42			WCDMA	42.20	15.20	8.65	
824-849MHz	GSM	43.80	26.32	23.97	36.50	869-884MHz	GSM	44.90	16.50	14.45	38.53
	CDMA	43.30	26.31	15.18			CDMA	43.80	16.20	6.63	
	WCDMA	41.00	27.28	11.28			WCDMA	44.00	16.90	1.10	
698-716MHz	GSM	44.60	27.83	25.17	25.43	728-746MHz	GSM	45.30	17.50	15.72	35.83
	CDMA	43.30	26.41	15.81			CDMA	45.20	18.20	7.91	
	WCDMA	41.00	27.63	11.95			WCDMA	45.20	18.60	2.48	
776-787MHz	GSM	40.10	24.41	23.34	22.00	746-757MHz	GSM	43.80	19.40	16.19	36.67
	CDMA	43.90	24.82	13.29			CDMA	43.10	17.20	6.50	
	WCDMA	41.50	24.40	9.37			WCDMA	43.10	17.90	0.66	

The Manufacturer's rated output power of this equipment is for single carrier operation. For situations when multiple carrier signals are present, the rating would have to be reduced by 3.5 dB, especially where the output signal is re-radiated and can cause interference to adjacent band users. This power reduction is to be by means of input power or gain reduction and not by an attenuator at the output of the device.

Kitting Information

Component	Product number	Gain/Loss					Note
		707 MHz	731 MHz	800 MHz	1900 MHz	1700 / 2100 MHz	
Outdoor Antenna*	SC-288W	3 dBi	3 dBi	3 dBi	4 dBi	4 / 4 dBi	
Outdoor Cable*	SC-240-40FN	3.52 dB	3.52 dB	3.98 dB	6.52 dB	6.122 / 6.92 dB	40 Feet or longer
Indoor Antenna	SC-120W	1.2 dBi	1.2 dBi	1.2 dBi	3 dBi	3 dBi / 3 dBi	

*All equivalent or lower gain antennas and cables are suitable for use with the Fusion2Go-RV booster.

Three-Year Product Warranty

Register at www.SureCall.com

SureCall warrants its products for three years from the date of purchase against defects in workmanship and/or materials. Specifications are subject to change. The three-year warranty only applies to products meeting the latest FCC Certification Guidelines stated on 2/20/2013 and going into effect April 30, 2014. A two-year warranty applies to any products manufactured before May 1, 2014.

Products returned by customers must be in their original, un-modified condition, shipped in the original or protective packaging with proof-of-purchase documentation enclosed, and a Return Merchandise Authorization (RMA) number printed clearly on the outside of the shipping container.

Buyers may obtain an RMA number for warranty returns by calling the SureCall Return Department toll-free at 1-888-365-6283. Any returns received by SureCall without an RMA number clearly printed on the outside of the shipping container will be returned to sender. In order to receive full credit for signal boosters, all accessories originally included in the signal booster box must be returned with the signal booster. (The Buyer does not need to include accessories sold in addition to the signal booster, such as antennas or cables.)

This warranty does not apply to any product determined by SureCall to have been subjected to misuse, abuse, neglect, or mishandling that alters or damages the product's physical or electronic properties.

SureCall warrants to the Buyer that each of its products, when shipped, will be free from defects in material and workmanship, and will perform in full accordance with applicable specifications. The limit of liability under this warranty is, at SureCall's option, to repair or replace any product or part thereof which was purchased up to THREE YEARS after May 1, 2014 or TWO YEARS for products purchased before May 1, 2014, as determined by examination by SureCall, prove defective in material and/or workmanship. Warranty returns must first be authorized in writing by SureCall. Disassembly of any SureCall product by anyone other than an authorized representative of SureCall voids this warranty in its entirety. SureCall reserves the right to make changes in any of its products without incurring any obligation to make the same changes on previously delivered products.

As a condition to the warranties provided for herein, the Buyer will prepay the shipping charges for all products returned to SureCall for repair, and SureCall will pay the return shipping with the exception of products returned from outside the United States, in which case the Buyer will pay the shipping charges.

The Buyer will pay the cost of inspecting and testing any goods returned under the warranty or otherwise, which are found to meet the applicable specifications or which are not defective or not covered by this warranty.

Products sold by SureCall shall not be considered defective or non-conforming to the Buyer's order if they satisfactorily fulfill the performance requirements that were published in the product specification literature, or in accordance with samples provided by SureCall. This warranty shall not apply to any products or parts thereof which have been subject to accident, negligence, alteration, abuse, or misuse. SureCall makes no warranty whatsoever in respect to accessories or parts not supplied by it.

Limitations of Warranty, Damages and Liability:

EXCEPT AS EXPRESSLY SET FORTH HEREIN, THERE ARE NO WARRANTIES, CONDITIONS, GUARANTEES, OR REPRESENTATIONS AS TO MERCHANTABILITY, FITNESS FOR A PARTICULAR PURPOSE, OR OTHER WARRANTIES, CONDITIONS, GUARANTEES, OR REPRESENTATIONS, WHETHER EXPRESSED OR IMPLIED, IN LAW OR IN FACT, ORAL OR IN WRITING.

SURECALL AGGREGATE LIABILITY IN DAMAGES OR OTHERWISE SHALL NOT EXCEED THE PAYMENT, IF ANY, RECEIVED BY CELLPHONE-MATE, INC. FOR THE UNIT OF PRODUCT OR SERVICE FURNISHED OR TO BE FURNISHED, AS THE CASE MAY BE, WHICH IS THE SUBJECT OF CLAIM OR DISPUTE. IN NO EVENT SHALL SURECALL BE LIABLE FOR INCIDENTAL, CONSEQUENTIAL, OR SPECIAL DAMAGES, HOWSOEVER CAUSED.

All matters regarding this warranty shall be interpreted in accordance with the laws of the State of California, and any controversy that cannot be settled directly shall be settled by arbitration in California in accordance with the rules then prevailing of the American Arbitration Association, and judgment upon the award rendered may be entered in any court having jurisdiction thereof. If one or more provisions provided herein are held to be invalid or unenforceable under applicable law, then such provision shall be ineffective and excluded to the extent of such invalidity or unenforceability without affecting in any way the remaining provisions hereof.

FCC and IC Information

This is a CONSUMER device.

BEFORE USE, you MUST REGISTER THIS DEVICE with your wireless provider and have your provider's consent. Most wireless providers consent to the use of signal boosters. Some providers may not consent to the use of this device on their network. If you are unsure, contact your provider.

You **MUST** operate this device with approved antennas and cables as specified by the manufacturer. Antennas **MUST** be installed at least 20 cm (8 inches) from any person. You **MUST** cease operating this device immediately if requested by the FCC or a licensed wireless service provider.

This device may be operated **ONLY** in a fixed location for in-building use.

WARNING: E911 location information may not be provided or may be inaccurate for calls served by using this device.

Important: Before installing your booster you need to register it with your carrier. You can do so online at the following urls:

Verizon: <http://www.verizonwireless.com/wcms/consumer/register-signal-booster.html>

AT&T: <https://securec45.securewebsession.com/attsignalbooster.com/>

T-Mobile: <https://www.signalboosterregistration.com/>

Sprint: https://www.sprint.com/legal/fcc_boosters.html

U.S. Cellular: <http://www.uscellular.com/uscellular/support/fcc-booster-registration.jsp>

FCC 27.50(d)(4) Statement: Fixed, mobile and portable (hand-held) stations operating in the 1720-1755 MHz band are limited 1 Watt EIRP. Fixed stations operating in this band are limited to a maximum antenna height of 10 meters above ground. Mobile and portable stations operating in this band must employ a means for limiting power to the minimum necessary for successful communications.

Note: This equipment has been tested and found to comply with the limits for a Class B digital device, pursuant to part 15 of the FCC Rules. These limits are designed to provide reasonable protection against harmful interference in a residential installation. This equipment generates, uses and can radiate radio frequency energy and, if not installed and used in accordance with the instructions, may cause harmful interference to radio communications. However, there is no guarantee that interference will not occur in a particular installation. If this equipment does cause harmful interference to radio or television reception, which can be determined by turning the equipment off and on, the user is encouraged to try to correct the interference by one or more of the following measures:

- Reorient or relocate the receiving antenna.
- Increase the separation between the equipment and receiver.
- Connect the equipment into an outlet on a circuit different from that to which the receiver is connected.
- Consult the dealer or an experienced radio/TV technician for help.

Industry Canada: This Class A digital apparatus meets all requirements of the Canadian Interference Causing Equipment Regulations. Operation is subject to the following two conditions: (1) this device may not cause harmful interference, and (2) this device must accept any interference received, including interference that may cause undesired operation.

The Manufacturer's rated output power of this equipment is for single carrier operation. For situations when multiple carrier signals are present, the rating would have to be reduced by 3.5 dB, especially where the output signal is re-radiated and can cause interference to adjacent band users. This power reduction is to be by means of input power or gain reduction and not by an attenuator at the output of the device.

Industry Canada: Cet appareillage numérique de la classe A répond à toutes les exigences de l'interférence canadienne causant des règlements d'équipement. L'opération est sujette aux deux conditions suivantes: (1) ce dispositif peut ne pas causer l'interférence nocive, et (2) ce dispositif doit accepter n'importe quelle interférence reçue, y compris l'interférence qui peut causer l'opération peu désirée.

La puissance de sortie nominale indiquée par le fabricant pour cet appareil concerne son fonctionnement avec porteuse unique. Pour des appareils avec porteuses multiples, on doit réduire la valeur nominale de 3,5 dB, surtout si le signal de sortie est retransmis et qu'il peut causer du brouillage aux utilisateurs de bandes adjacentes. Une telle réduction doit porter sur la puissance d'entrée ou sur le gain, et ne doit pas se faire au moyen d'un atténuateur raccordé à la sortie du dispositif.

48346 Milmont Drive
Fremont, California 94538
USA
888.365.6283
www.surecall.com

SureCall has made a good faith effort to ensure the accuracy of the information in this document and disclaims the implied warranties of merchantability and fitness for a particular purpose and makes no express warranties, except as may be stated in its written agreement with and for its customers. SureCall shall not be held liable to anyone for any indirect, special or consequential damages due to omissions or errors. The information and specifications in this document are subject to change without notice. © 2017. All Rights Reserved. All trademarks and registered trademarks are the property of their respective owners.

This is a **CONSUMER** device.

BEFORE USE, you MUST REGISTER THIS DEVICE with your wireless provider and have your provider's consent. Most wireless providers consent to the use of signal boosters. Some providers may not consent to the use of this device on their network. If you are unsure, contact your provider.

You **MUST** operate this device with approved antennas and cables as specified by the manufacturer. Antennas **MUST** be installed at least 20 cm (8 inches) from any person. You **MUST** cease operating this device immediately if requested by the FCC or a licensed wireless service provider.

WARNING. E911 location information may not be provided or may be inaccurate for calls served by using this device.