

DATASHEET

IndustrialPro™ 6000 Router Industrial Cellular Connectivity

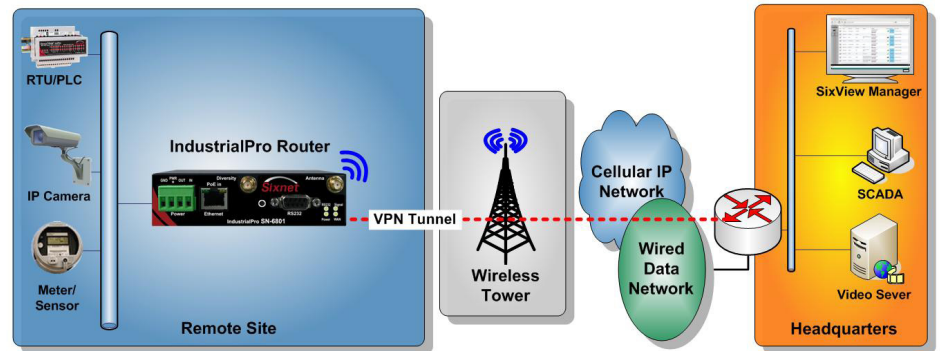


PRODUCT HIGHLIGHTS

- Remote site access lowers total cost of ownership
- Simplified deployment and configuration provides ease of use
- Web-based monitoring and management simplifies deployment
- Facilitate connectivity in space-constrained locations
- Built-in security provides infrastructure protection
- Rugged, reliable design supports the toughest applications
- Need for separate Modbus gateway is eliminated
- Secure Modbus polling
- Software Development Kit (SDK) for a wide variety of markets

Sixnet's IndustrialPro™ 6000 cellular router provides secure, cost-effective wireless connectivity to remote locations and assets. As reliable primary WAN connections or backup to existing network links, the IndustrialPro cellular routers are ideally suited for harsh industrial environments where space may be limited and wired connectivity is not feasible.

With Ethernet and Serial interfaces, our rugged industrial cellular routers connect RTUs, meters, sensors and other remote devices to a central site or a central SCADA server. Integrated Modbus support brings cellular connectivity to virtually any installed Modbus capable RTU, PLC or controller. Managed by the SixView Manager, the IndustrialPro provides user-friendly, web-based management alongside comprehensive remote configuration and control.



FEATURES & BENEFITS

Ubiquitous Cellular Connectivity

- Costs less per month than traditional landlines
- Provides comprehensive coverage without dedicated infrastructure
 - 2G/2.5G (GSM GPRS/EDGE and CDMA 1XRTT)
 - 3G (GSM WCDMA/HSDPA/HSUPA or EVDO Rev A)

Built-In Security & Routing

- Protects against unwanted intrusion
- Provides ultra-reliable modbus enabled cellular connectivity
 - Secure modbus data using IPSec VPN tunnels
 - VPN tunnel: IP SEC, SSL
 - Port forwarding
 - Stateful Firewall
 - Packet Filtering
 - Access Control List (ACL)

Powerful Web-Based Management

- Simplifies deployment and configuration
- Provides remote monitoring and control
 - Mass activation and device upgrades
 - Remote diagnostics and troubleshooting
 - Reporting of key metrics

Rugged, Compact Design

- Deploys easily in space-constrained locations
- Requires less cabling and power supplies
 - 40 to +85°C operating temperature
 - DIN-rail mounting
 - Power over Ethernet (PoE) options

Total Cost of Ownership Advantages

- Eliminates visits to remote sites
- Reduces infrastructure complexity
 - Connect multiple devices to single WAN link
 - Remote TCP/IP based capabilities
 - Integrated switching/routing capabilities
 - Serial to IP conversion
 - Access IP and serial devices simultaneously



FLEXIBLE. RELIABLE. SECURE.

IndustrialPro 6000 Router

Industrial Cellular Connectivity

SPECIFICATIONS

Wireless Interface

- Dual-band CDMA2000 EVDO Rev. A (backward compatible with 1xRTT)
- GSM HSPA (backward compatible with EDGE)
- EDGE/GPRS

Ethernet Interface

- 1xRJ45 Ethernet 10/100 auto-sensing (SN-6x01, SN-6x01EB)
- 5x RJ45 Ethernet 10/100 auto-sensing (SN-6x21)

Serial Interface

- 1x RS-232 Serial DB9 115200bps

USB Interface

- 1x USB2.0 mini

LED Status Indicators

- Power, WAN, Signal, RS232, Ethernet Link and Activity

Dimensions

- SN-660x: Steel 120 x 96 x 32 mm (4.7" x 3.77" x 1.25"), 453g (1 lb)
- SN-6621: Steel 120 x 96 x 51 mm (4.7" x 3.77" x 2.0"), 500g (1.1 lbs)

Power Input

- 8 - 30 Vdc (12Vdc nominal)

Environmental

- Operating Temp: -40 to +85°C
- Shock: IEC60068-2-27,
- Vibration: IEC60068-2-6
- Humidity: 5 to 95% non-condensing

Certification

- EMC:FCC, part 15 and Industry Canada, ICES-003
- Hazardous Locations: Class I, Div. 2, Groups A,B,C,D, UL1604
- Electrical Safety: UL508/CSA22.2/14 (CUL)

Routing Protocols

- OSPF, BGP, RIP

Encapsulation Protocols

- GRE and IPinIP

Tunneling

- VPN: IPSec and SSL

Clustering

- VRRP

IP

- NAT, Port Forwarding, Dynamic DNS, DHCP
- Stateful Inspection Firewall, IP Transparency

Warranty

- 3 years on design and manufacturing defects

All specifications are subject to change. Contact Sixnet to learn more.

ORDER GUIDE

PART NUMBER	DESCRIPTION
SN-6401	Full router capability, 1 Ethernet port, 1 serial port, EDGE/GPRS
SN-6401-EB	Full router capability, 1 Ethernet port, 1 serial port, PoE, EDGE/GPRS
SN-6421	Full router capability, 5 Ethernet ports, 1 serial port, EDGE/GPRS
SN-660x	Full router capability, 1 Ethernet port, 1 serial port, CDMA/EVDO Rev. A
SN-6601-EB	Full router capability, 1 Ethernet port, 1 serial port, PoE, CDMA/EVDO Rev. A
SN-6621	Full router capability, 5 Ethernet ports, 1 serial port, CDMA/EVDO Rev. A
SN-680x	Full router capability, 1 Ethernet port, 1 serial port, HSPA/EDGE/GPRS
SN-6801-EB	Full router capability, 1 Ethernet port, 1 serial port, PoE, HSPA/EDGE/GPRS
SN-6821	Full router capability, 5 Ethernet port, 1 serial port, HSPA/EDGE/GPRS

SIXVIEW MANAGER

Powerful Remote Management and Monitoring Software

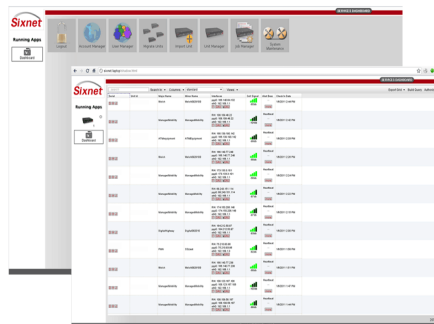
With SixView Manager's enterprise-class network management features, users have access to:

Remote Monitoring & Reporting of Key Metrics

- Uptime
- Utilization
- Signal strength (RSSI)
- Firmware version, ESN, MDN, IMEI
- IP Address

Remote Administration

- Mass configuration changes and updates
- Remote executable (i.e., reboot)



ABOUT SIXNET

Celebrating over 35 years in operation, Sixnet provides innovative machine-to-machine (M2M) industrial networking solutions that integrate wireless, automation and switching technologies to better serve customers and markets worldwide. Sixnet's flexible solutions enable organizations to cost-effectively increase business productivity. By integrating powerful enterprise-class networking with rugged reliability, Sixnet meets the standards of the most demanding applications in industries such as power & energy, banking & retail, transportation, video & security, utilities, military, mobile data, maritime and more. Based in Ballston Lake, NY, the company has offices across North America, Asia and Europe.

For more information, visit www.sixnet.com, email sales@sixnet.com or call +1 518 877 5173



Sixnet, LLC Corporate Headquarters
331 Ushers Road, Ballston Lake, NY 12019

T +1 518 877 5173 F +1 518 877 8346



FLEXIBLE. RELIABLE. SECURE.